

Video Intercom

Products Solutions

Apartment solutions, Villa solutions



CONTENTS



Overview

Product & Solution Review



Residential Community

Focus on residential and apartment scenario



Villa

One-to-one intercom, plug & play

Product & Solution Overview



IP Big Apartment System



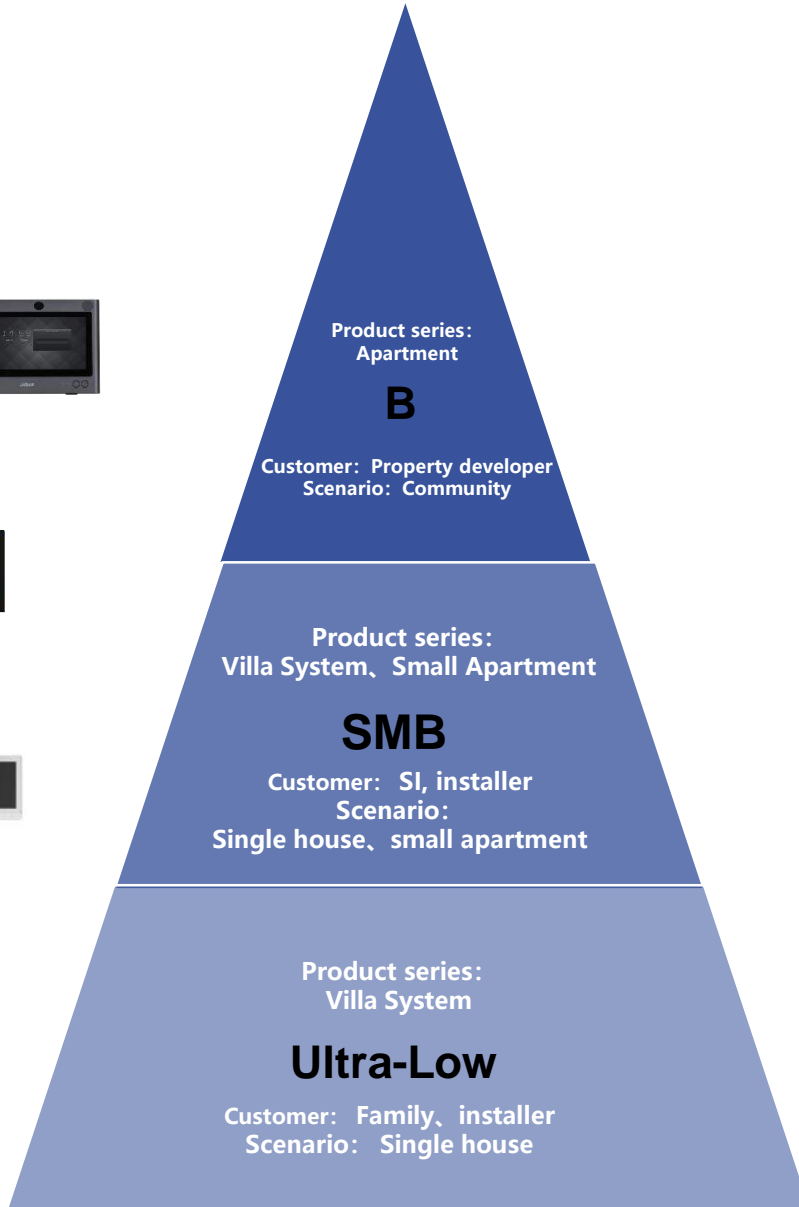
IP Small Apartment System



IP Villa System



Analog Villa System



Advantage of Apartment Solution

- **SIP Big Apartment System**, worked with DSS platform which cover community easily, fit for the large residential projects.
- **Small Apartment System**, worked with software management center and mobile DMSS, Flexible applies to small apartment.

Advantage of Villa Solution

- **IP Villa Kit**, improved the quality of the video and audio fit for the customer's demand as Cost-effective, strong competitiveness, Mobile APP.
- **Analog Villa Kit**, plug & play , easy installation by cat5e

/01

Residential Community Solution

System structure and highlights

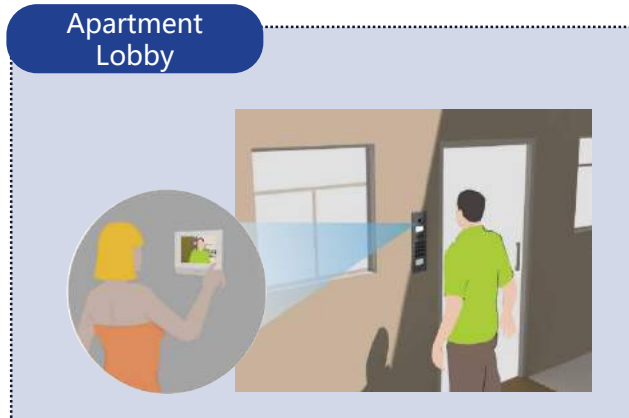
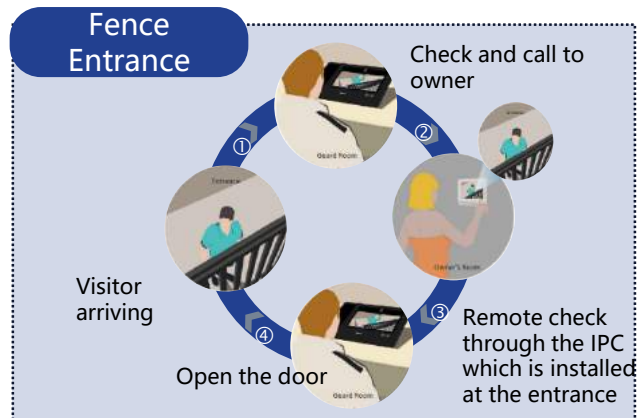
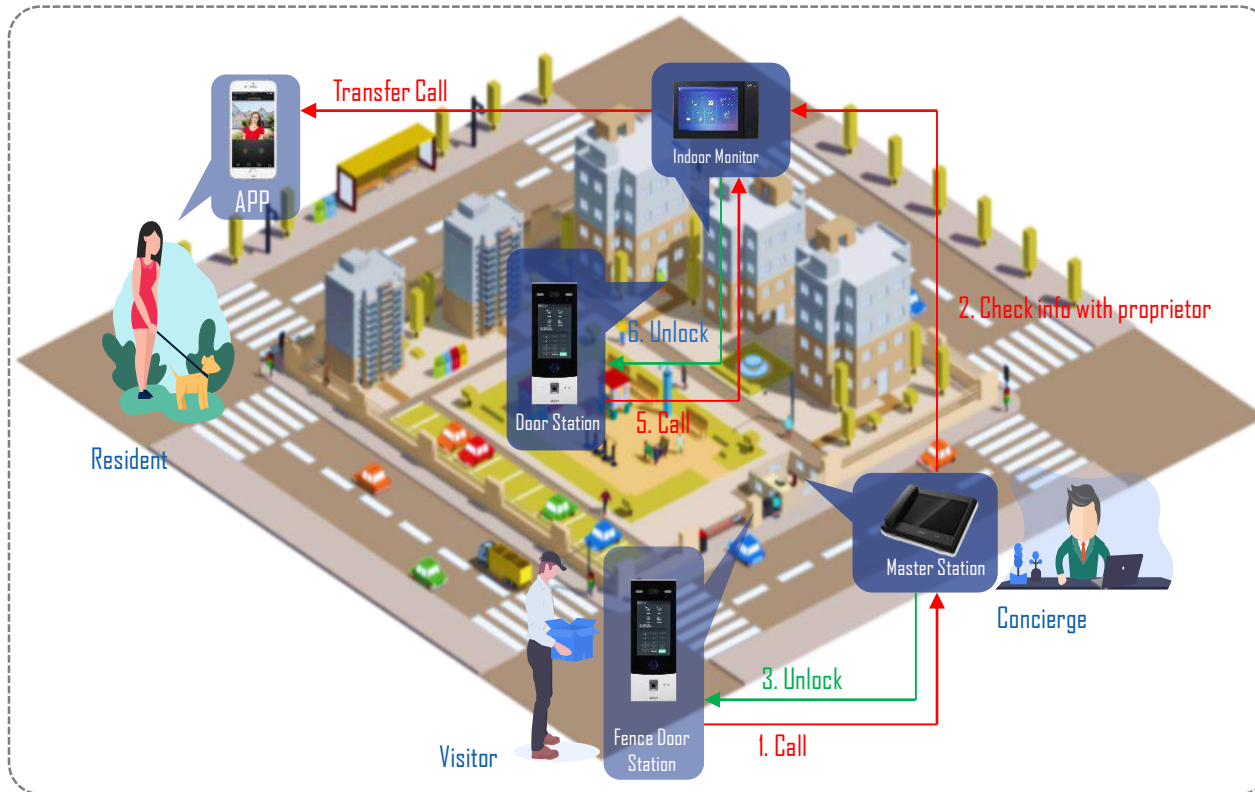


Community



Apartment

Residential Community Scenario



Scenario

An apartment or a residential usually need to manage access control and residents to improve safety, convenient and quality of life. In common area doors/gates, all people access by a visual controller. Manage center or resident home must know the details of the door so that all visitors are managed in safety way.

Roles in this scenario

Visitor

- Visitors call concierge through the Fence Door Station in the front of community
- Concierge check the visitor info with resident through the Master Station, then makes door release
- Visitor call the resident through the Unit Door Station in the front of the apartment, resident makes door release

Resident

- Multiple ways to access: card, password, fingerprint, face and call security guard
- Receive the call and unlock via the Indoor Monitor and APP
- Mobile app: intercom, door release & alarm push
- Property service demand by calling Master Station

Concierge

- Visitors management
- Provide property service on time by two-way talk between Monitor and Station



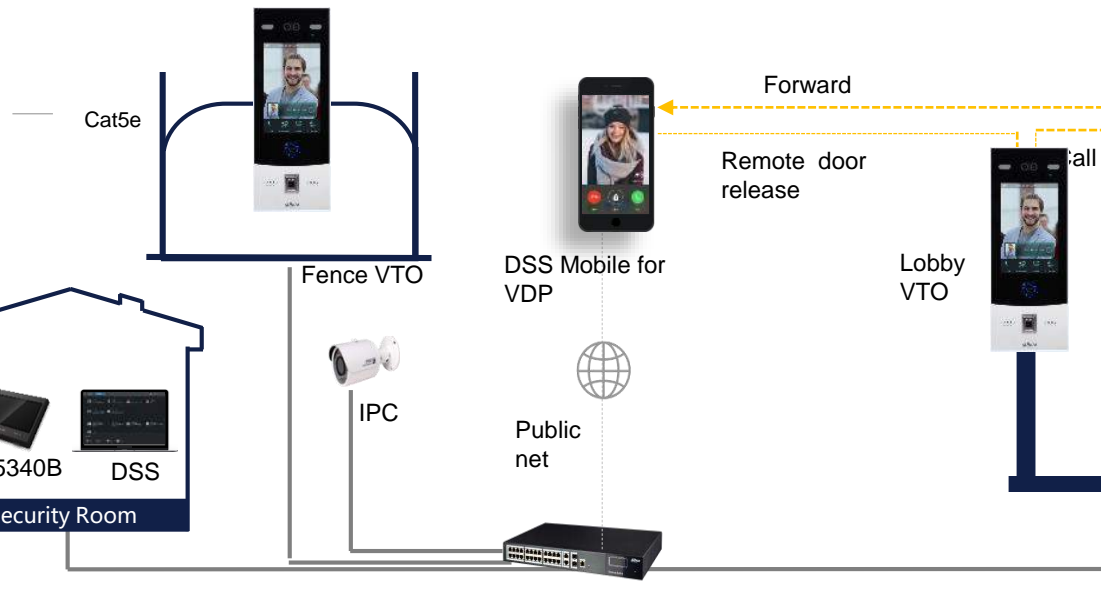
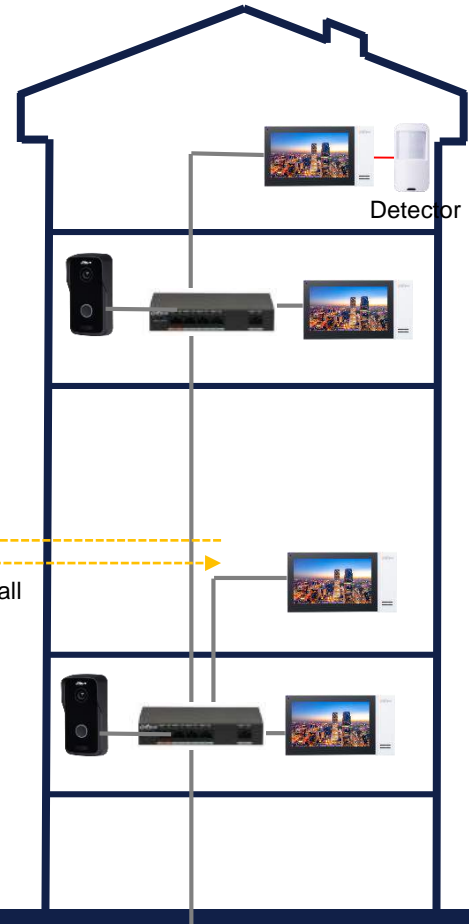
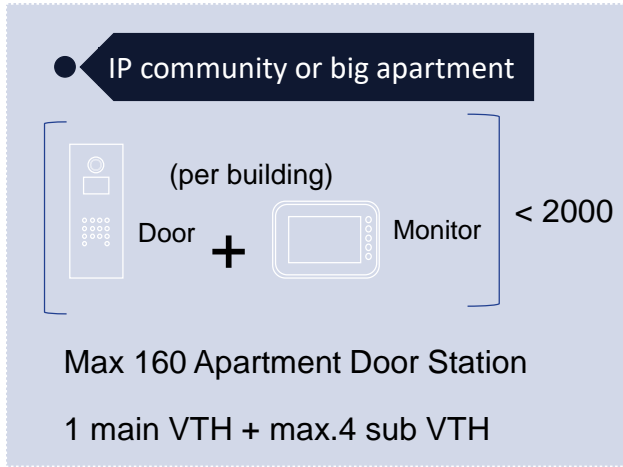
Management Center

- Unlock history and call history
- Release the txt information to VTH
- VTH alarm uploads and linkage
- Unlock door remotely

SIP Server

- All Video Door Phone products registered into the sever
- All terminal devices can video intercom with the server and each other.

Community Intercom System Architecture



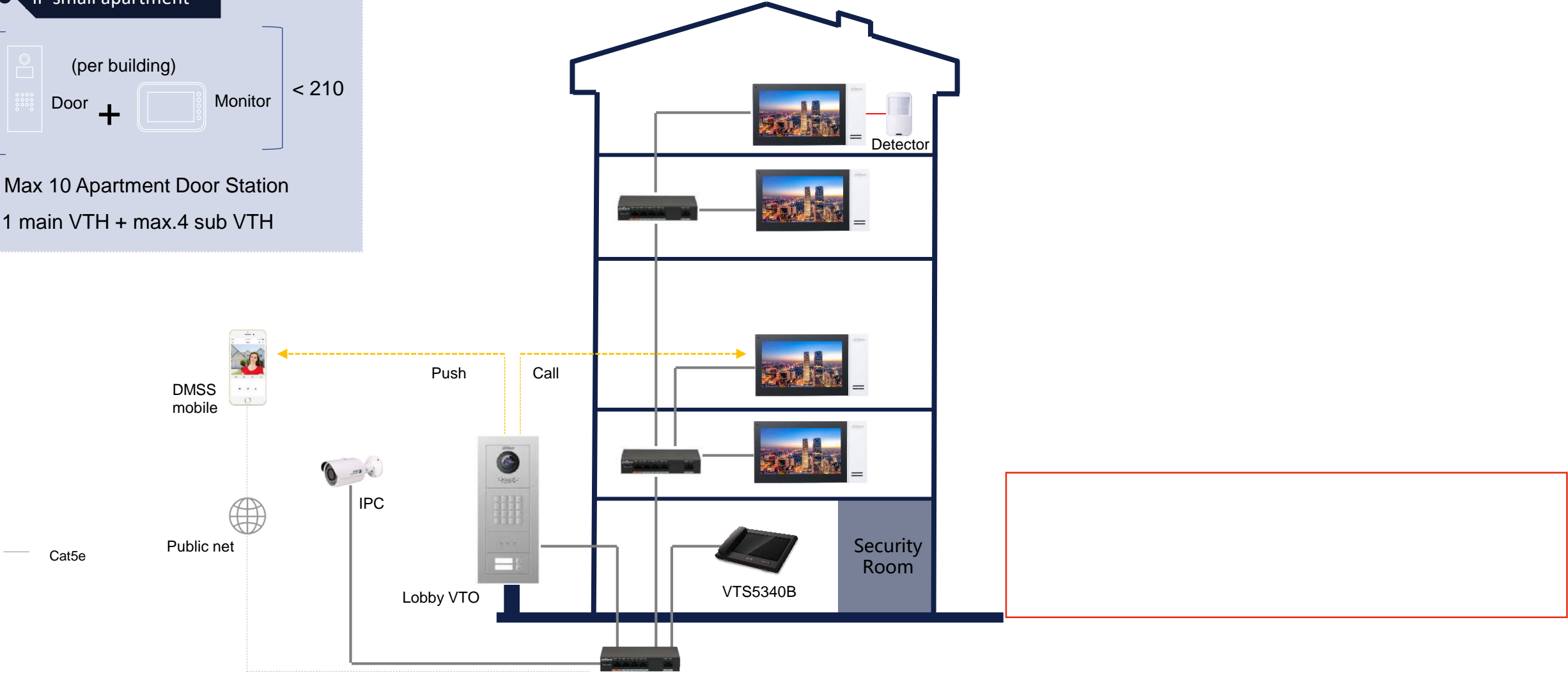
Small Apartment Intercom Architecture



● IP small apartment

(per building)
Door + Monitor < 210

Max 10 Apartment Door Station
1 main VTH + max.4 sub VTH



System Highlights



Powerful system capacity



HD, wide view angle for door station

Other Company



DAHUA



Best audio



Remote unlock



Video integration



Intercom in any devices



Product Selection



Apartment door Station



NEW

VTO9541D

10 inch Face Recognition VTO
2MP, IP65,IK07
Card(100K), **Face(100K)**
Fingerprint(10K)
Aluminum alloy & Tempered
glass, Flush



NEW

VTO7541G

8 inch Face Recognition VTO
2MP, IP66,IK07
Card(10K), **Face(20K)**
Fingerprint(10K)
Aluminum alloy & Tempered
glass, Flush and Surface



VTO6521F
2MP, IP65, IK07
4.3inch screen
Card :10,000
Aluminum alloy
Flush and Surface



VTO6541H
2MP, IP65
4.3inch screen
Card (10K) **Face(10K)**
Fingerprint(10K)
PC+ABS
Flush and Surface



VTO6531H
2MP, IP65
4.3inch screen
Card (10K) **Face(10K)**
Fingerprint(10K)
PC+ABS
Flush and Surface



VTO6521H
VTO6521H-D
2MP, IP65
4.3inch screen
Card :10,000
-D: ID card
PC+ABS
Flush and Surface



VTO6221E-P
2MP, IP65, IK08
Aluminium
Surface & Flush

Modular door Station

Main Module



VTO4202F-P Series
2.0MP, 160° fisheye,
IP65, IK07, Aluminum
Surface & Flush
IP and 2-wire,
standard POE



VTO4202F-P
Camera module
2.0MP



VTO4202F-MS
Screen module



VTO4202F-MB5
5 button module



VTO4202F-MK
Keypad module
Support Braille



VTO4202F-MF
Fingerprint module
3000



VTO4202F-ML
Led module,
half unit



VTO4202F-MR
RFID module
half unit,
IC card(10K)



VTO4202F-MB1
1 button module
half unit



VTO4202F-MB2
2 button module
half unit

2nd Confirm Door Station



VTO1101D-P
2MP, H:107°
IP65, Plastic
Night vision
Standard PoE

Not support door release



VTO1201G-P
2MP, H:125°
IP65, Plastic
Night vision
Standard PoE

Not support door release

IP Indoor Station

Connected by cat5e network cable



VTH5321GB/GW-W
7" Capacitive
Android 8.1
Standard POE



VTH5341G-W
10" Capacitive
Android 8.1
Standard POE



VTH5421E(W)-H
7" Capacitive
Handset
Standard POE



VTH2421FW-P/FB-P
7" Capacitive
1024*600
Standard POE
8GB SD card embedded



VTH5221D/DW-S2
7" TFT Capacitive,
1024x600;
WiFi



VTH1550CH-S2
7" Capacitive
Micro SD, Max 32GB
Surface

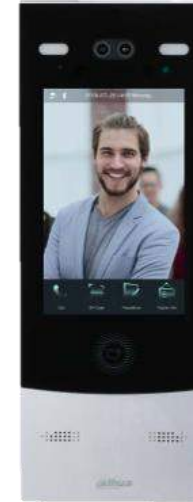
New Products



10 inch Face Recognition VTO



8 inch Face Recognition VTO



8 inch VTO

Model: VTO9541D
Apartment door Station

- 10 inch Face Recognition VTO
- 2MP, IP65,IK07
- Card(100K),Face(100K)
- Fingerprint(10K)
- Aluminum alloy & Tempered glass,
- Flush

Model: VTO7541G
Apartment door Station

- 8 inch Face Recognition VTO
- 2MP, IP66,IK07
- Card(10K),Face(20K)
- Fingerprint(10K)
- Aluminum alloy & Tempered glass,
- Flush and Surface

Model: VTO7521G
Apartment door Station

- 8 inch VTO
- 2MP, IP66,IK07
- Card(10K)
- Aluminum alloy & Tempered glass,
- Flush and Surface

/02

Villa Intercom Solution

IP and analog solution

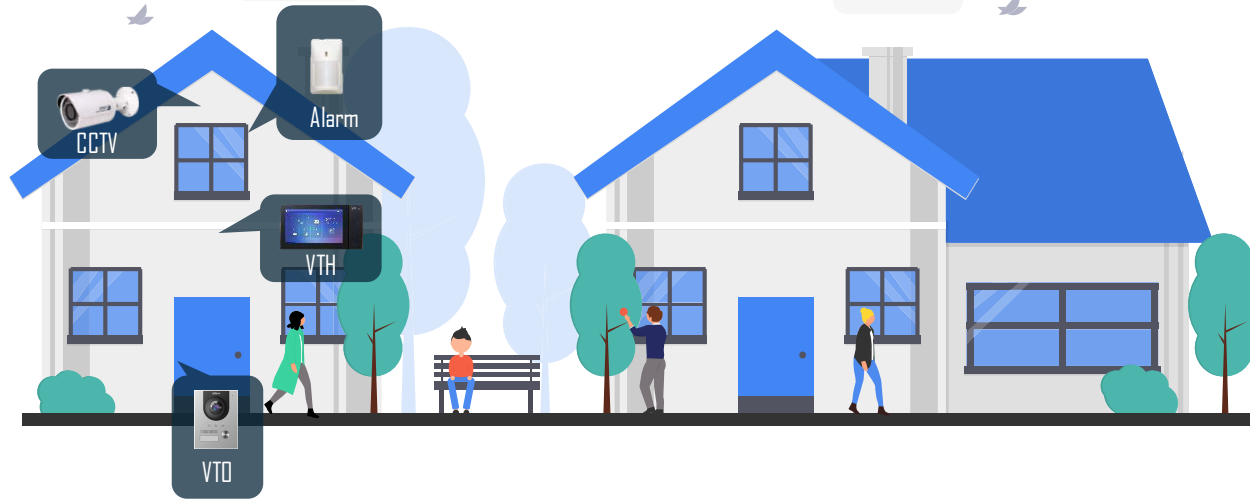
Mobile app management



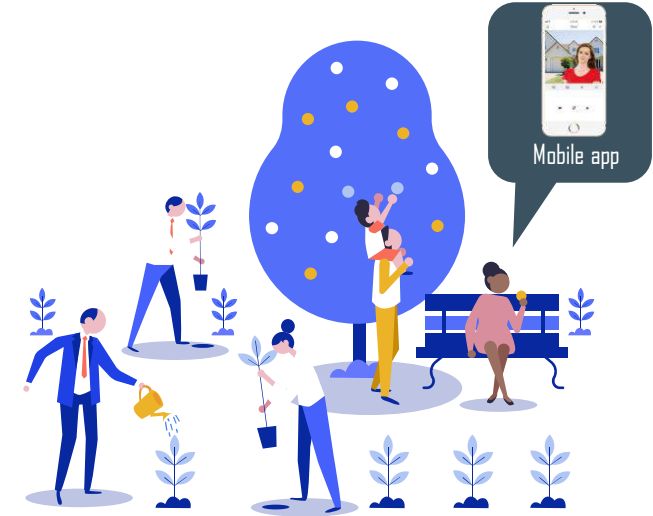
Villa

Villa Scenario

- 1 Visitors call the proprietor and make audio & video intercom;
Door release via indoor monitor;



- 2 Receive the call remotely;
Door release via mobile app;
Alarm push;



Operation Flow

- Multiple door-release ways: card, password ;
- Receive the call and unlock via the VTH;
- Receive alarm information on VTH or mobile app;
- Preview IPC video on VTH;
- Mobile app: intercom, door release & alarm push;

Resident

Visitor

- Visitors call residents through the VTD;
- The resident answers and opens the door;

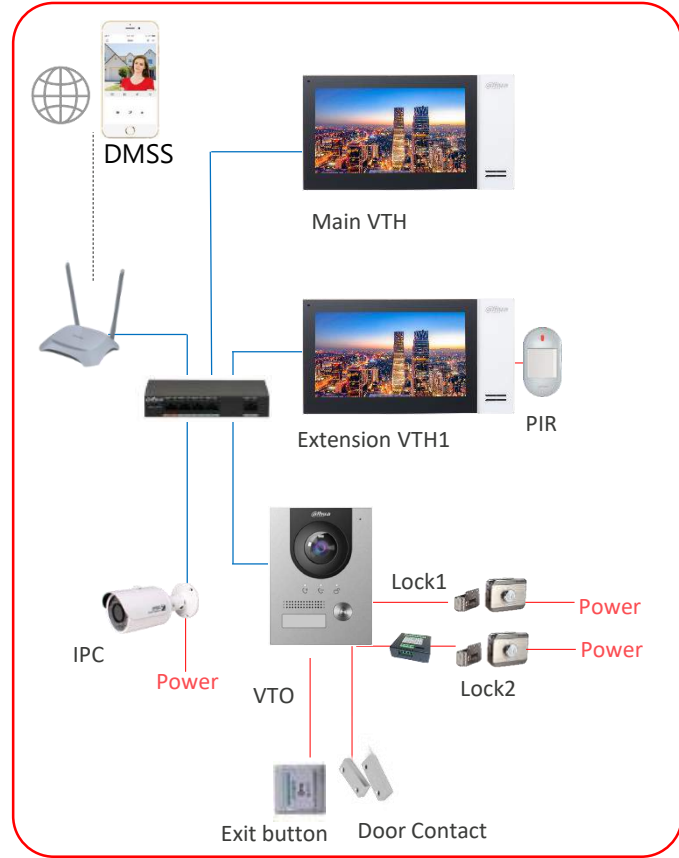
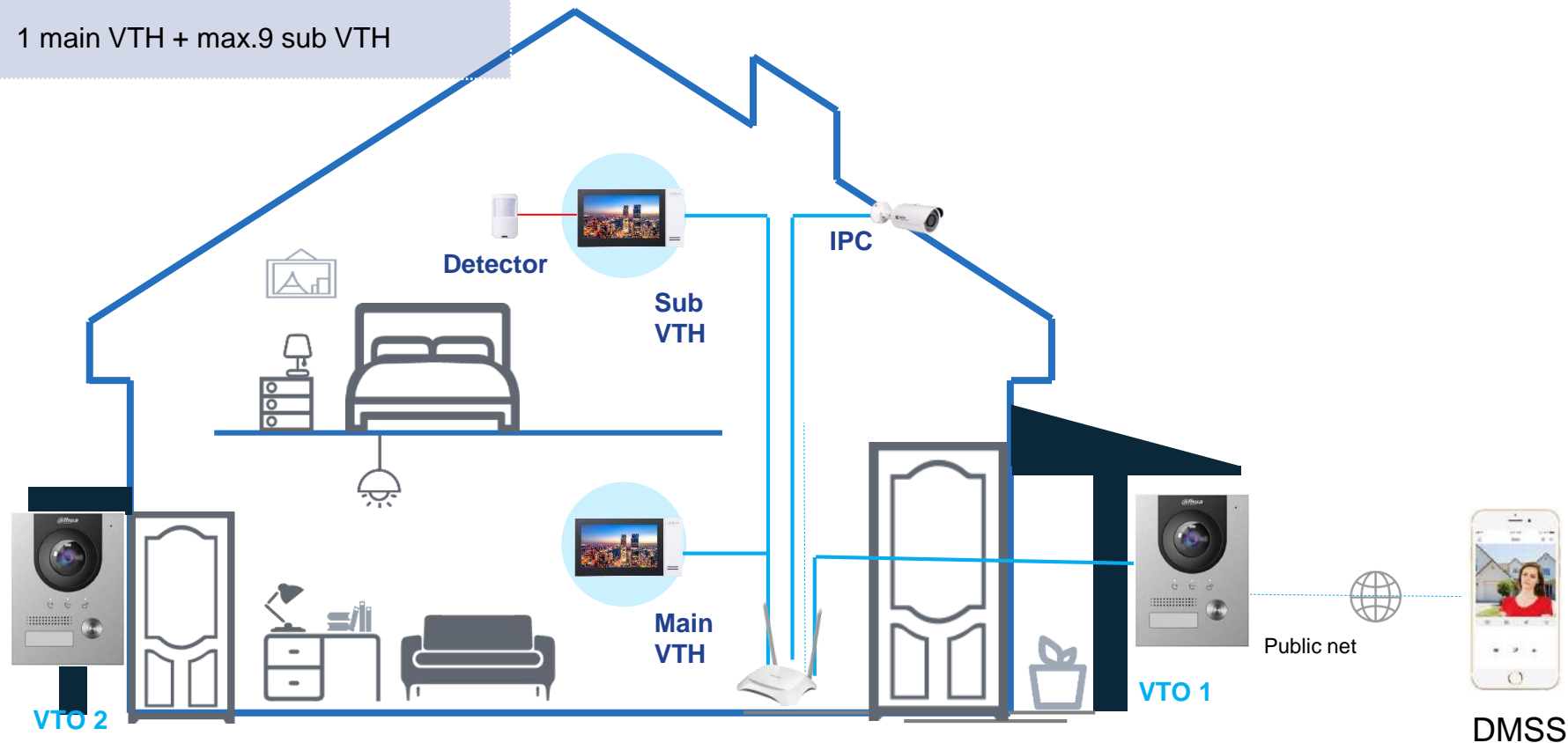
IP Villa System Architecture

IP Villa System

(per building)

20 Door + 10 Monitor

1 main VTH + max.9 sub VTH



DMSS

Wifi Villa System Architecture

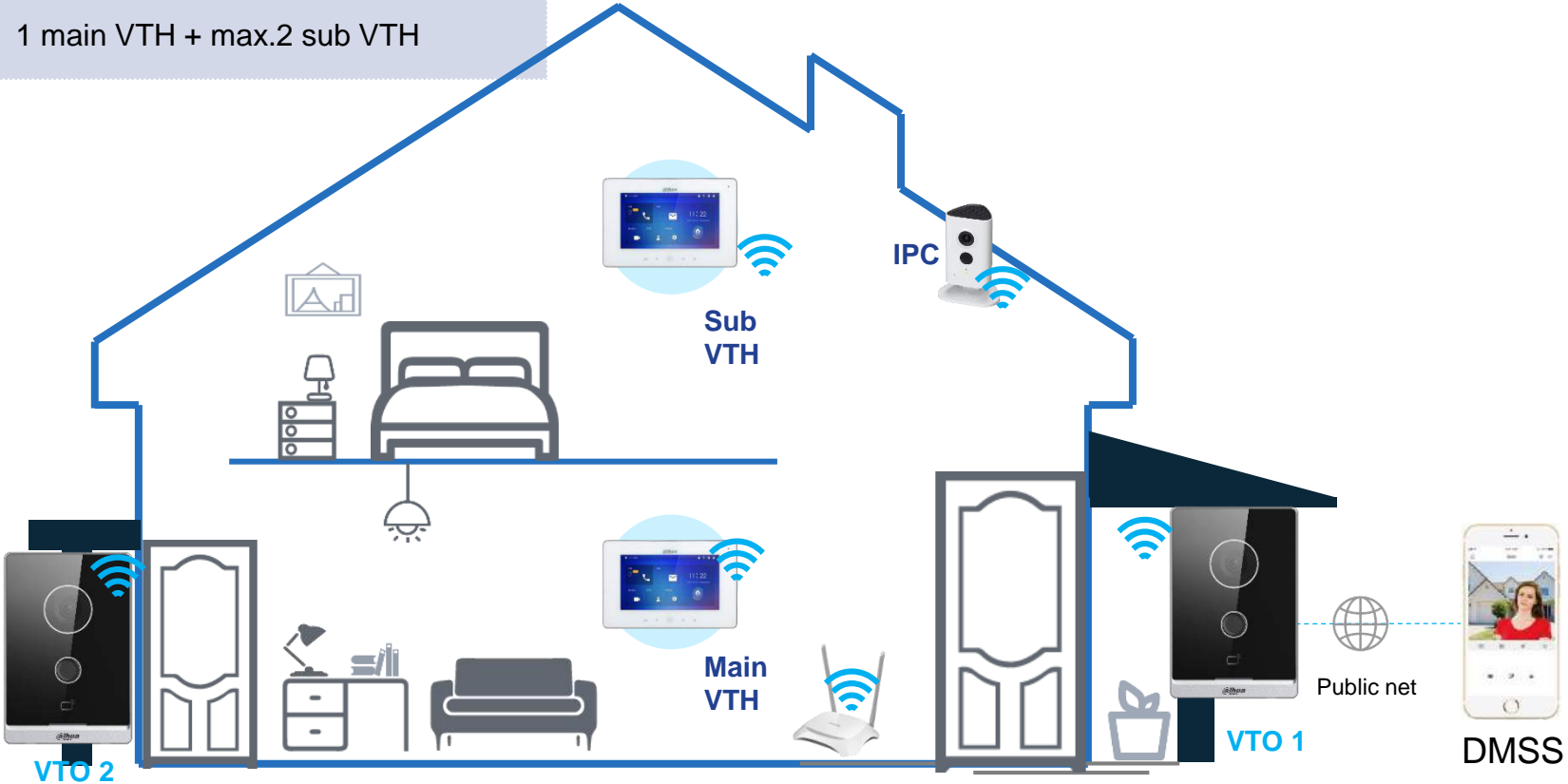


Wifi Villa System

(per building)

4 Door + 3 Monitor

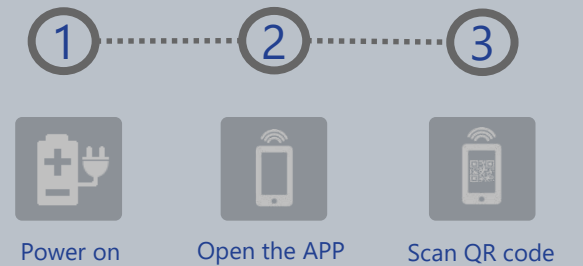
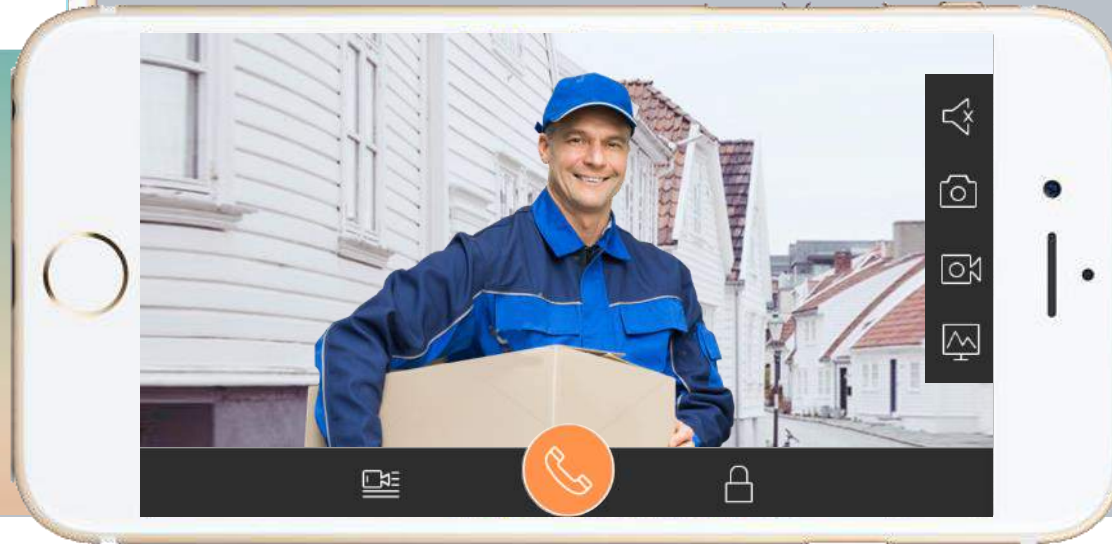
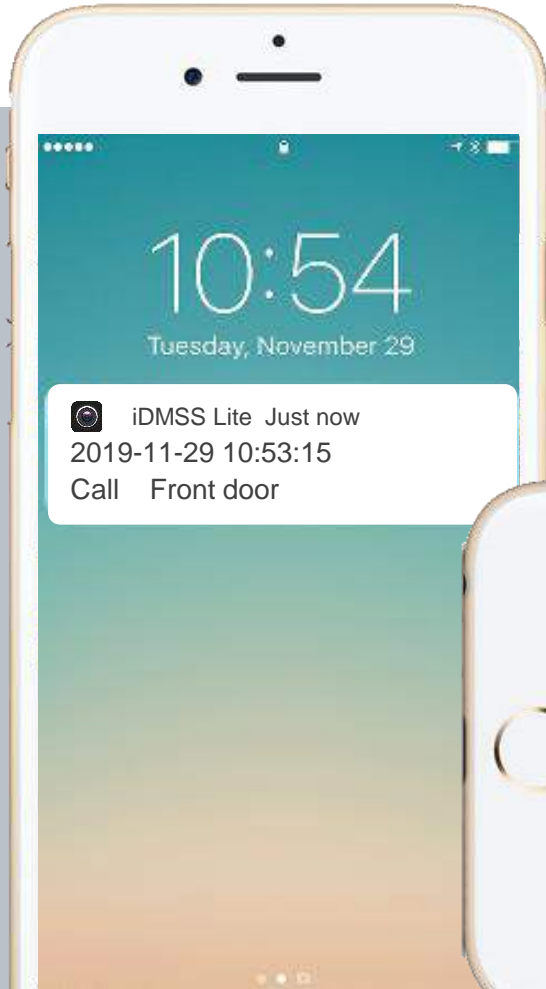
1 main VTH + max.2 sub VTH



Mobile APP---DMSS



Remote intercom ,Remote door release



Product selection

IP Villa Door Station



VTO2211G-P/ VTO2211G-WP
2MP, H:125°
IP65
Plastic



VTO3211D-P1-S2/P2-S2/P4-S2
2MP, H:129°
IP65,IK08
Aluminum



VTO2111D-P-S2
2MP, H:107°
IP65
Plastic



VTO2202F-P
IP65,IK07
Aluminum,
Surface and Flush



VTO2101E-P-S1
2MP, IP65,IK10
Aluminum
Surface



VTO3221E-P
2MP, IP65,IK08
Aluminum
Surface and Flush

Product selection

IP Indoor Monitor



VTH5321GB/GW-W
7" Capacitive
Android 8.1
Standard POE
Micro SD, Max 256GB



VTH5341G-W
10" Capacitive
Android 8.1
Standard POE
Micro SD, Max 256GB



VTH5421E-H/EW-H
7" Capacitive,handset
Standard POE
Surface and desktop
Micro SD, Max 32GB



VTH5441G
10" Capacitive
Embedded 8GB
Surface, standard POE



VTH2421FW/FB-P
7" Capacitive,1024*600
Standard POE
8GB SD card embedded



VTH5221D/DW-S2
7",Capacitive,1024x600
Micro SD, Max 32GB
Surface

IP Villa KIT



KTP01
VTO2202F-P + VTH2421FW-P +
PFS3005-4ET-60
2MP, H:160° fisheye
IP65, IK07
7" capacitive touch screen
Mobile APP DMSS, POE



KTP02
VTO2111D-P-S2 + VTH2421FB-P
+ PFS3005-4ET-36
2MP, H:107°
IP65
7" capacitive touch screen
Mobile APP DMSS, POE



KTW01
VTO2211G-WP + VTH5221DW-S2
2MP, IP65
7" capacitive touch screen
Wi-Fi, POE, Mobile APP DMSS



Analog Villa KIT



KTA01
VTO2010D+VTH2020DW
2.0 MP CMOS,
IP65&IK07
7" LCD screen
Plug & Play

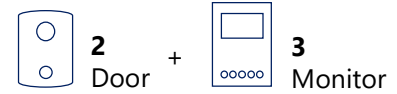


KTA02
VTO1000J+VTH1020J
2.0 MP CMOS,
IP66
7" LCD screen
Plug & Play



KTA03
VTO1000J+VTH1020J-T
2.0 MP CMOS,
IP66
7" LCD screen
Plug & Play
Snapshot

New Analog System Structure & Highlights



- 2MP CMOS camera
- Night Vision
- Alarm Integration
- Group Call

New products(Accessories)



VTM01R2

Rain cover with vertical pole for two modules
(For VTO4202F-P Series)



VTM02R2

Surface mounted rain cover for two modules
(For VTO4202F-P Series)



VTM03R3

Surface mounted rain cover for three modules
(For VTO4202F-P Series)



VTM04R4

Surface mounted rain cover for 2*2 modules
(For VTO4202F-P Series)



VTM06R6

Surface mounted rain cover for 2*3 modules
(For VTO4202F-P Series)



VTM05R

Surface mounted rain cover
(For VTO2202F/VTO2201F Series)



VTM07R

Surface mounted rain cover, It has the function of receiving the cable
(For VTO3211D-P1/P2/P4 Series)



VTM08R

Surface mounted rain cover
(For VTO3221E/VTO6221E series)



VTM09R

Surface mounted rain cover
(For VTO2211G Series)

A dark blue background with a light blue curved line that starts from the bottom left and curves towards the top right. The word "Thanks" is written in white, bold, sans-serif font on the right side of the image.

Thanks